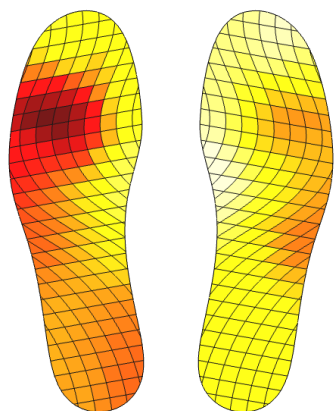
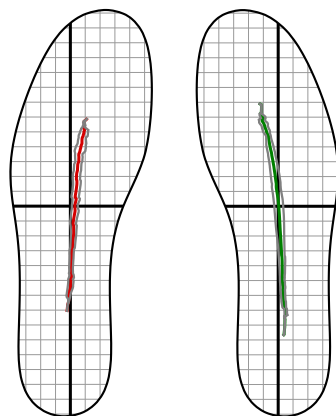


1 Average pressure

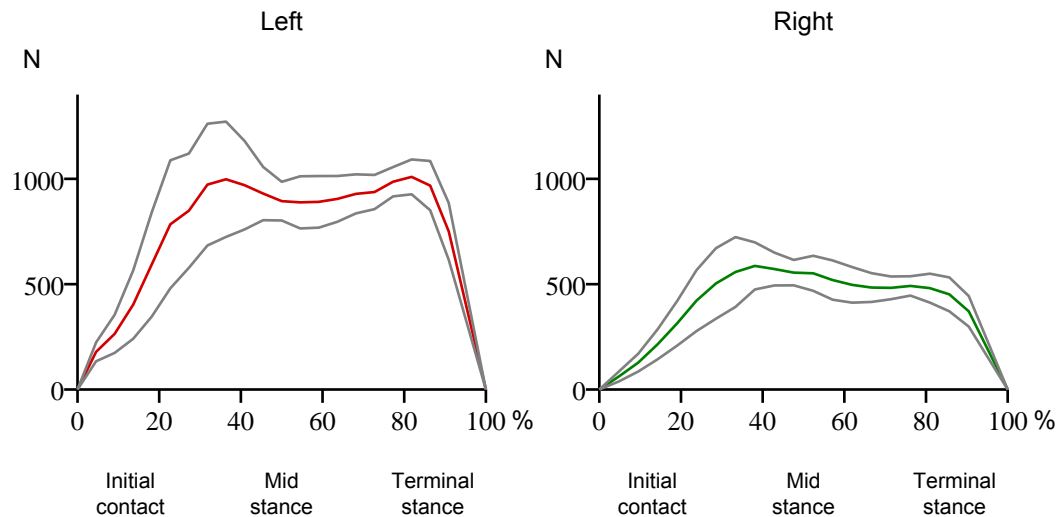


2 Gait line



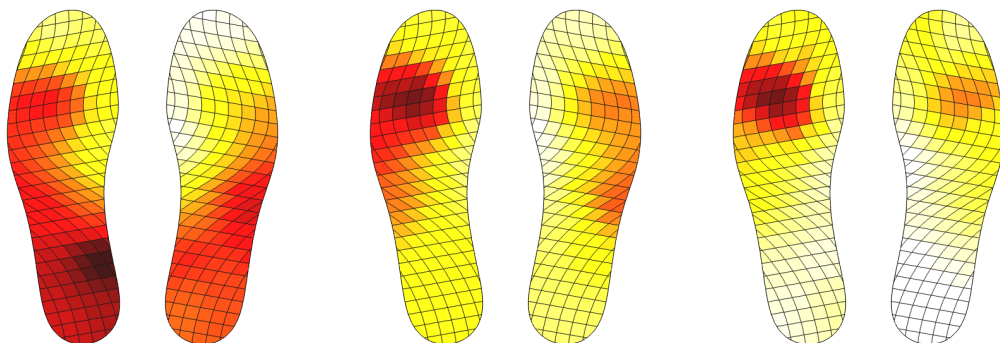
Average gait line:
 Length 110.1 mm Length 123.8 mm
 Width 11.6 mm Width 14.4 mm

3 Ground reaction force



4 Gait phases

Initial contact Mid stance Terminal stance

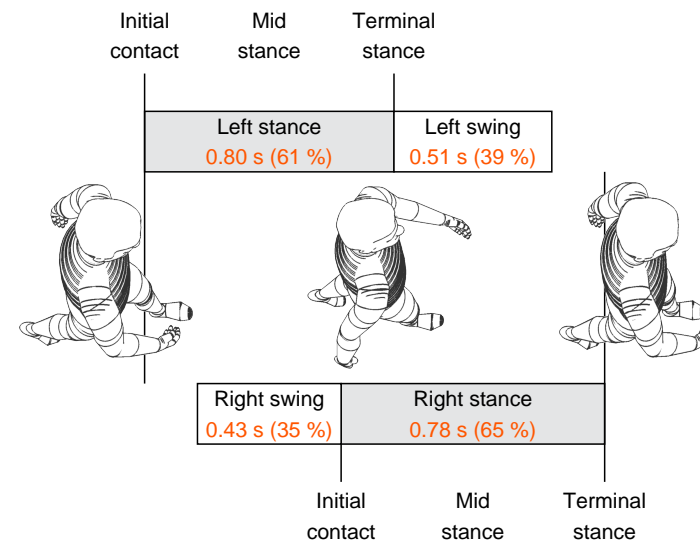


5 Timing

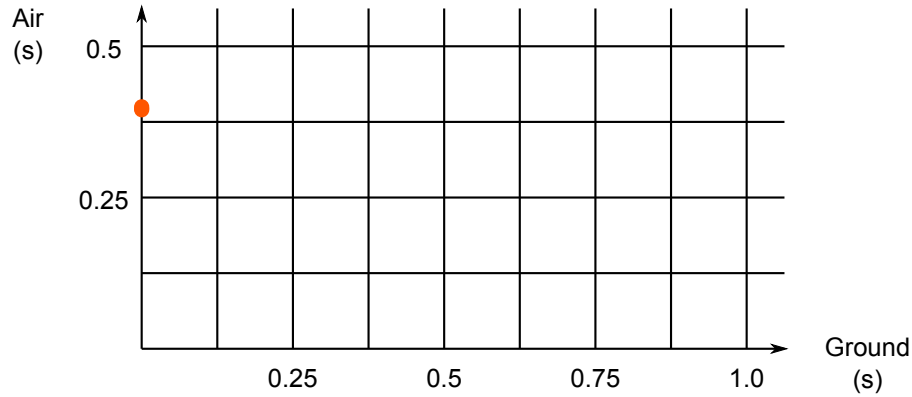
Average temporal parameters:
 Gait cycle 1.26 s
 Cadence 47.7 r/min
 Double support 0.32 s (26 %)

Overall number of steps:
 Left steps 13
 Right steps 15

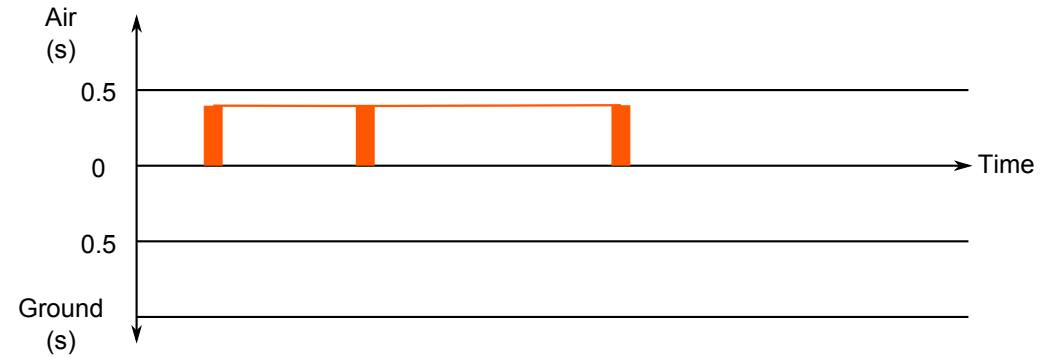
Step sample size for statistics
 (walking sequences):
 Left steps 9
 Right steps 10



Air time vs. ground contact time



Air time and ground contact time



Jump phases

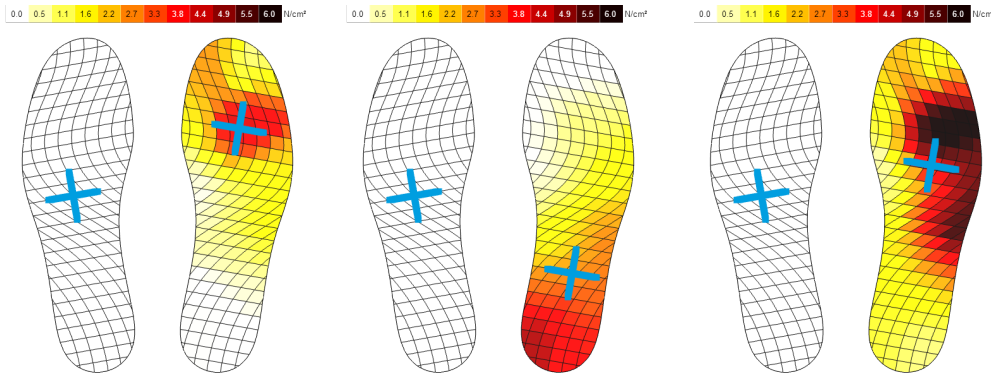
Average temporal values		Average impulse	
Air time	0.40 s	Total	211 Ns
Ground contact		Left	
Number of jumps	3	Right	211 Ns

Right air
0.40 s

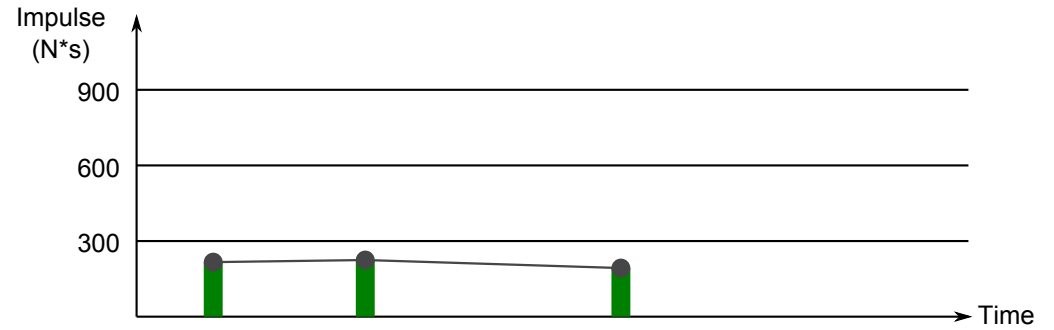
Terminal stance
(take-off)

Initial contact
(landing)

Mid stance



Jump power



Total force

